



# MNRS







Medical/Nursing/Resident Student  
Rotation Tracking System

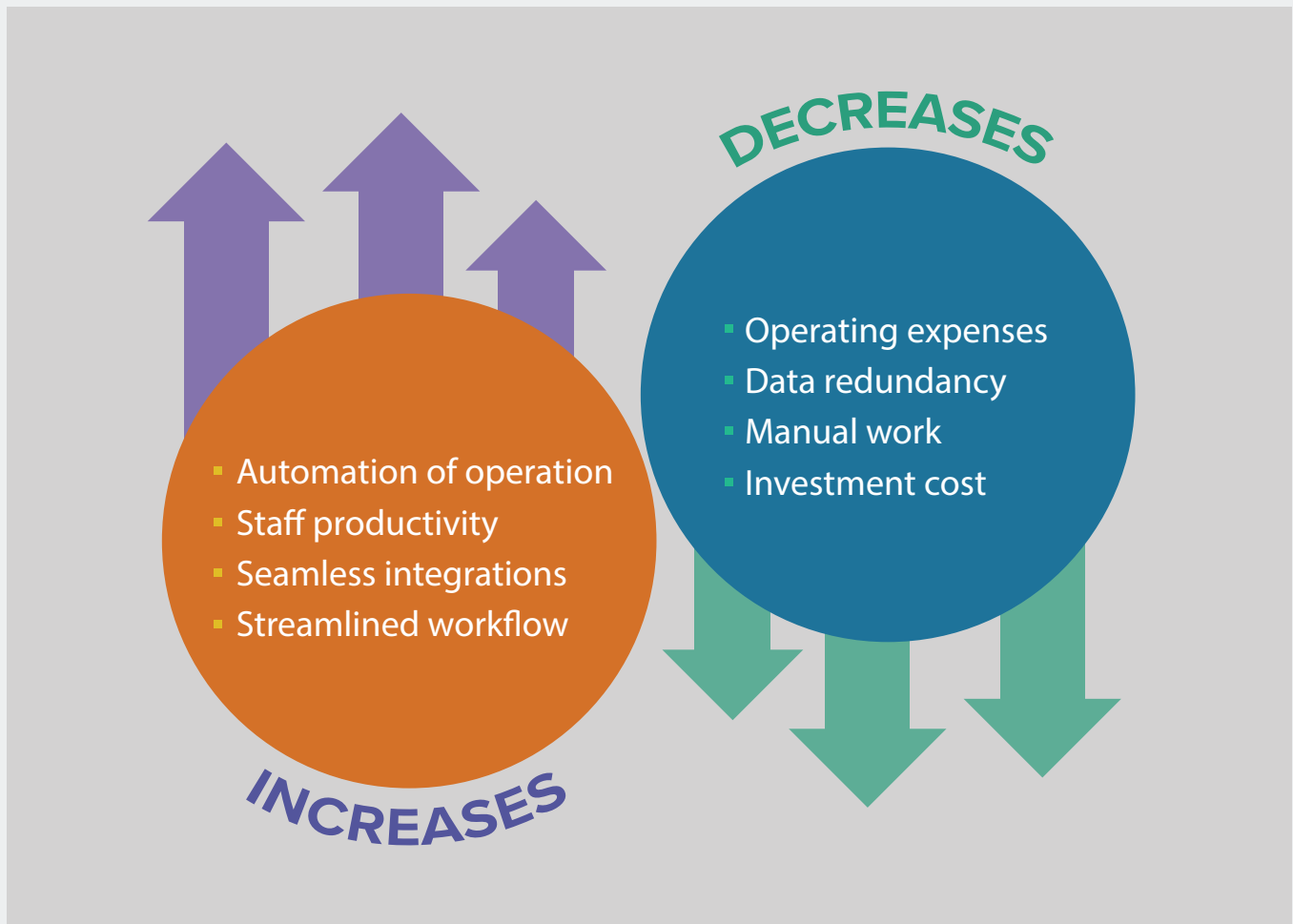


This system is for any hospital to manage student rotations across various health education programs offered in all their campuses

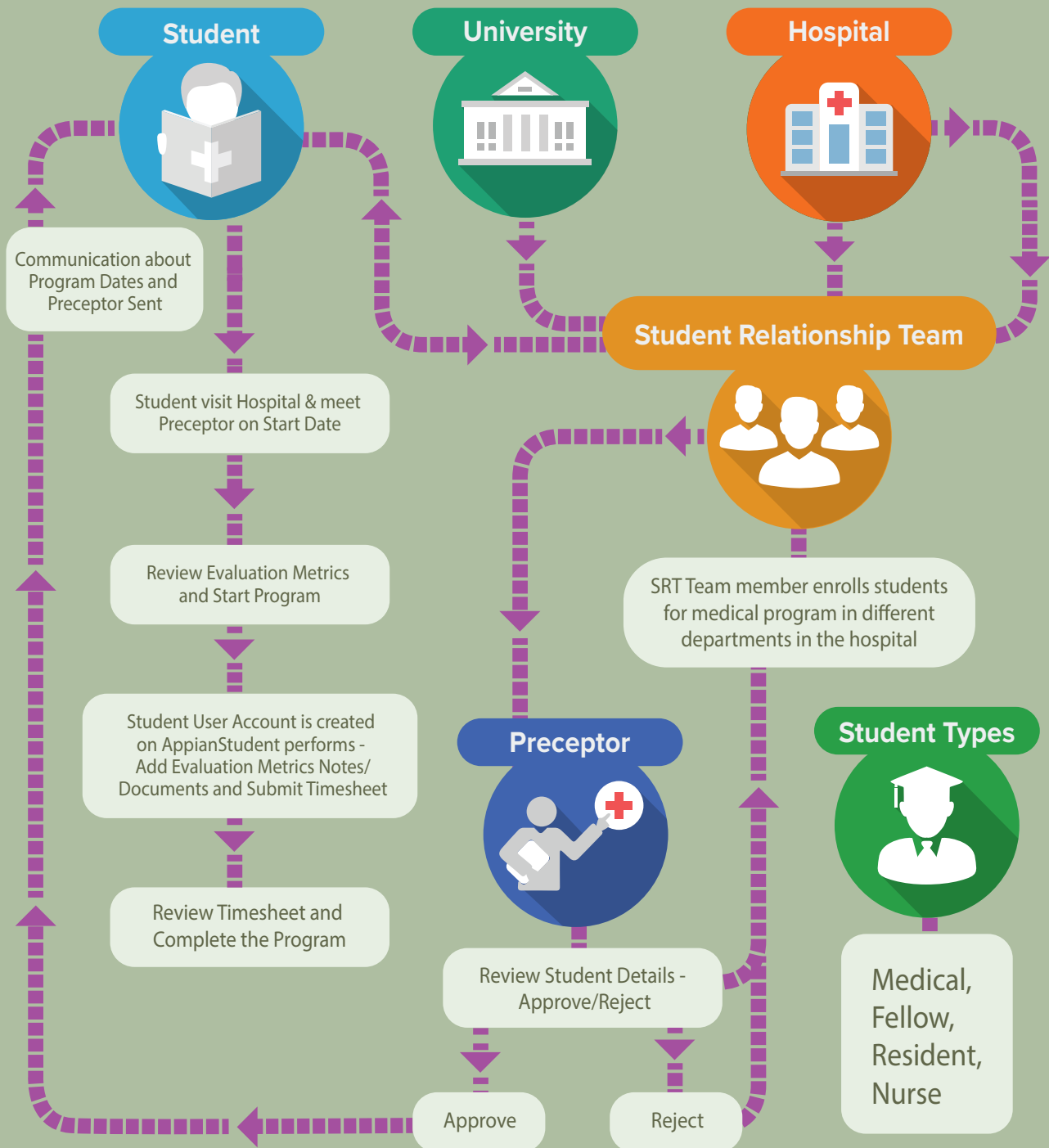
- ✓ A versatile system to simplify program administration
- ✓ Reduce institutional oversight of clinical education programs
- ✓ Scalable to fit across all academic-related healthcare venues
- ✓ Enroll any number of students, improve learning outcomes
- ✓ Integrates seamlessly with various third party databases

# Highlighting features & Benefits

Application Bundles			
	Preceptor assignments		Department and program database
	Rotation mapping		Comprehensive logs and reports
	Bulk student profile creation		Customizable evaluation component



# Basic workflow



## Value Proposition of the application

MNRS is a robust solution handling everything from student scheduling to evaluations with intuitive workflows for easy implementation

Students may report outcomes, details of their program time spent, other available data points for a rapid visual overview of the progress

The application leads to enhanced student retention, persistence, and successful completion rates

MNRS comes with fully automated Selenium based regression testing suite

# Key functionalities

## Preceptor/Students:

- Update profile details at any time
- Access all the program details, update the evaluation metrics with the notes or documents
- Track the hours spent on their enrolled program
- Access all the program details, update the evaluation metrics
- Add notes or documents
- Track the hours spent on the enrolled program
- Update Duration and timesheet on a real-time calendar

## Collaboration Center:

Exchange questions & answer and chats submitted by any student in the collaboration center

## Communication Center (ICC):

The student and the student support team agent from the hospital can talk via phone, SMS or chat instantly to enroll

## Student relationship team:

- Add entries to department, program, student and university records
- Upload bulk student database for enrollment in different programs
- Assign the available preceptor through advanced search features

## Student relationship team:

- Students enrolled for any programs across the year
- The success ratio of a program based on the program against completion or cancellation

## Records:

- Student records
- Department and program records
- University and preceptor records

## Actions



Add or Update Student Profile



Check Preceptor Availability & Assign



Maintain Department & Programs



Maintain University Profile



Upload Bulk Student Profile

## Records



Student



Department & Program



University



Preceptor

## Reports



Students Enrolled by Month



Pending Preceptor Approvals



Completed vs Cancelled Programs