

**APIAN SOLUTION**

# PRIOR AUTHORIZATION REVIEW

Simplify and streamline prior authorization requests

## THE CHALLENGE

The prior authorization process can be extremely time-consuming and expensive.

**You're likely spending millions of dollars every year** manually reviewing and responding to requests. Plus, because you can't keep up, you end up approving unnecessary services, costing you even more.

The bottom line: you're unable to grow your member base because your review process is slow, expensive, and frustrating.

But it doesn't have to be.



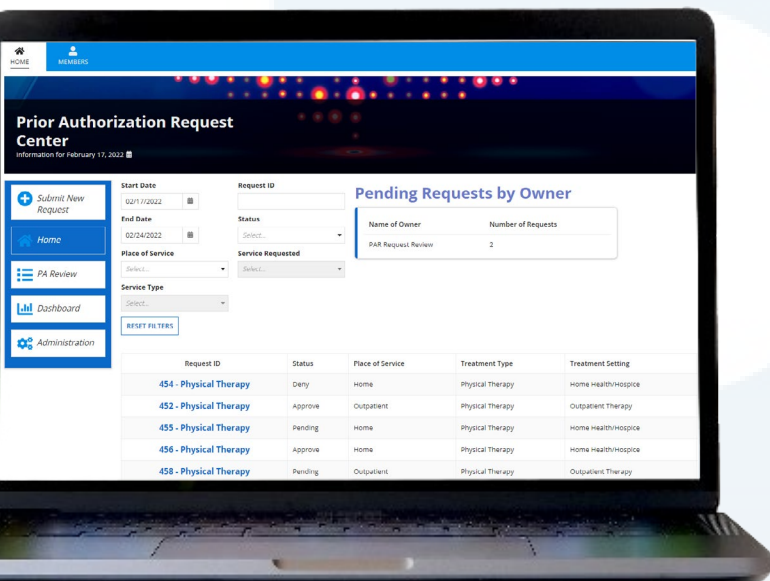
## THE SOLUTION

*Prior Authorization Review* is a digital solution for managing all aspects of the prior authorization review process.

Handle more requests with less overhead, **realize cost-savings of more than 50%**, and turn around decisions at a much faster rate.

Eliminate your manual processes to improve member care, increase provider satisfaction, and handle more members.

It's time to revolutionize your operations with *Prior Authorization Review*.



**APPIAN SOLUTION**

# PRIOR AUTHORIZATION REVIEW

Simplify and streamline prior authorization requests

## SOLUTION FEATURES

- Customizable intake forms to capture all request details
- Custom decision logic to automatically approve, deny, or pend requests
- Integration capabilities for member and provider directories
- Portal for reviewing and updating requests, including outcome, effective dates, and visit limits
- Automated member letters summarizing request outcome
- Administrative portal to define response timelines, employee worklists, etc.
- Reporting dashboards with customizable filters

## BUSINESS IMPACTS

- Review and complete more requests with less overhead
- Accelerate request turnaround times **from days to minutes**
- Realize dramatic cost savings (**upwards of 50%**)
- Eliminate unnecessary approvals
- Simplify and streamline authorization decision-making
- Mitigate delays in member care
- Enable operational growth
- Reduce employee burden and frustration

